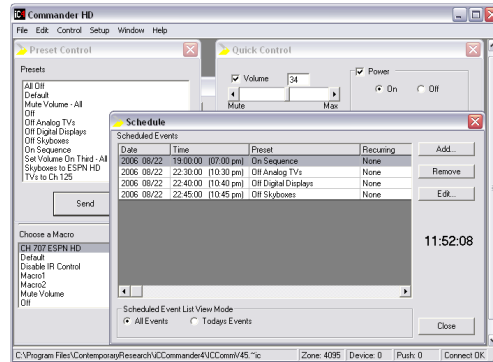


iC-Commander HD Display Control System

Applications

Retail Stores
Sports Venues
Civic Facilities
Houses of Worship
Entertainment Spaces
Corporate Communication



Sales Support

Planning a display control application? Our Sales Support staff will be happy to work with you, providing expert integration assistance and a complete systems proposal.

Tech Support

Need tech help? Give us a call. Our tech support staff are experts in the integration industry, so we can research solutions in the proposal stage, advise on programming requirements, and resolve installation issues.

Our job is to make our solutions work seamlessly with your system, performing as promised.

Related Products

SignStream HDTV Digital Signage
ABC-Net Media Access System
iC-Net Smart Display Controllers
iC-Net Display Controllers
iC-Net Tuner Controllers
iC-Net Head Ends

The iC-Commander HD Display Control System is a complete, PC-based solution that control video displays, projectors, and TVs over the same RF coax as the system's TV channels.

The system begins with iC Commander HD software that include administrative-level tools for system setup, and user-level control panels for launching presets, sending manual control commands, and scheduling events by time, date, and recurring cycle. The new software supports both analog and digital HD cable channels using HDTV displays with CableCard® access to subscription programming.

Control commands are sent via IP to an Ethernet-to-RF Head End that inserts the data into the existing CATV system. Versatile iC-Net controllers can integrate displays, TVs, and projectors using RS-232, IR, and Smart format control.

As an open-architecture platform, iC-Commander systems can control a variety of display types, makes, and models, and easily integrates with AMX and Crestron control systems.

System Components

iC Commander HD Display Manager

- Windows® software application
- Enables integration of analog, digital, and digital HD cable channels with CableCard access to premium programming
- Password-protected setup pages
- User-level preset, manual, and schedule control pages
- Creates integrated display group/control presets
- Launches presets from automated schedule
- Provides point-and-click manual display control commands
- Launches presets from automated schedule
- Networks with Ethernet-to-RF Head End for display control

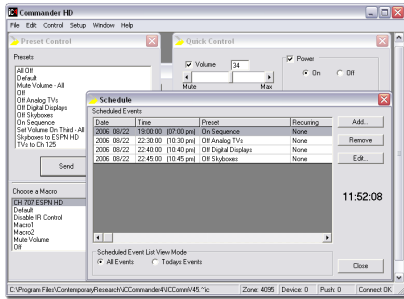
Ethernet-to-RF Head End

- Communicates with Server via Ethernet or RS-232
- Sends control commands through the same RF coax as TV channels

Display Controllers

- Control IR, RS-232, and Smart displays, TVs, and projectors
- Network over RF coax
- Operate channel, power, input, and lockout control
- Available with onboard tuners for monitors and projectors

iC-Commander HD Display Control System



**iC-Commander HD
Display Manager**



Ethernet-to-RF Head End



IR and RS-232 Display Controllers



Display Controller/Tuners

Display Manager

Feature	iC-Commander HD Display Manager
General	Windows® application runs on 98/2000/XP and higher OS
Computer	Pentium® and above processor, 512 MB, 80 GB hard drive RS-232 and/or Ethernet port to support Head End communication
Displays	Requires HDTV and CableCard® equipped display for digital channel access

Head End

Feature	ICE-HE Ethernet Head End
General	Sends control commands through RF to iC-Net controllers
Physical	19" W x 1.75" H (1RU) x 9" D, 3 lbs
Control	10/100 Ethernet, RS-232 control input Sends control data via RF, 74.7 MHz, narrow-band signal between channels 4 and 5 Receives status data at 5.6MHz, below sub-channels from 2-way iC-Net controllers
Includes	Rack mounting hardware, 12 VDC Power Supply, 500 Ma

Display Controllers

Feature	ICC1-IR	ICC1-232	ICC1-PRZ
Type	IR Display Controller	RS-232 Display Controller	Smart Display Controller Philips, RCA, Zenith
Control	Discrete IR control Power, Channels, Inputs	RS-232 commands Power, Channels, Inputs Control Lockout (if available)	SmartPort Power, Channels, Inputs Control Lockout
Physical	5.5" W x 1.1" H x 3.4" D 8 oz	5.5" W x 1.1" H x 3.4" D 8 oz	5.47" W x 6.4" H x 1.1" D 12 oz
Tuning	NTSC and HDTV channels		
Includes	IR Emitter RF Loop Cable 12 VDC PS, 100 Ma	RS-232 cable optional RF Loop Cable 12 VDC PS, 100 Ma	Smart TV data link cable RF Loop Cable 12 VDC PS, 100 Ma
Options			Philips/Zenith Smart Card

Display Controller/Tuners

Feature	ICC2-IRC	ICC2-VDC
Type	IR Display Controller with Tuner	RS-232 Display Controller with Tuner
Control	Discrete and sensed IR control Power, Channels, Inputs	RS-232 commands Power, Channels, Inputs Control Lockout
Physical	8.5" W x 1.75" H x 6.0" D, 1.5 lbs	
Tuning	Onboard NTSC tuner, off-air, cable, HRC, and IRC modes, external AV input	
Includes	IR Emitter HDS Scan Sensor 12 VDC PS, 500 Ma	RS-232 cable optional 12 VDC PS, 500 Ma

Warranty

All CR products feature a full two-year warranty.

Contemporary Research • 17630 Davenport Rd., Suite 113 • Dallas, TX 75252
Phone: 972-931-2728 • Toll Free: 888-972-2728 • Fax: 972-931-2765

iC Commander HD System NDS 0306 © 2006, specifications subject to change without notice