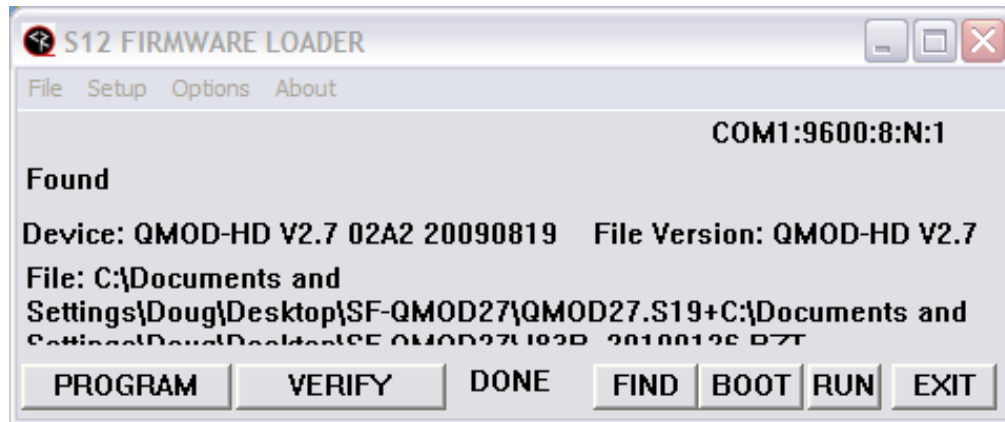


S12 Firmware Loader - QOMD

RS-232 Tool for CR Control Firmware



The firmware download process works simply and easily:

- Download the desired firmware self-extracting EXE file.
- Connect the S12-series CR product to an RS-232 port with a null modem cable and note which RS-232 port you are using
- Make sure programs such as HotSync aren't already using the RS-232 port
- Run the SF-QMODxxx.EXE program, then click SETUP to select COM port
- When the program connects with the QMOD, you'll see the name of the product after **Device:** and the firmware file you are loading after **File Name:**
- Normally, the desired firmware file is already loaded – you can use **File/Open** if you have several firmware files stored in your PC
- Click the **PROGRAM** button to start the loading process. You may see several messages while the program tests the COM port baud rate - You'll see a RUN message when the load process begins.
- The VERIFY, FIND, BOOT, RUN are manual operations that the loader and PROGRAM performs automatically - you'll rarely use them unless asked by CR Tech Support.

Check the front panel of the QMOD if you are having problems loading the firmware. If the upper right corner flashes an X or other letter, the status information the unit is sending back interferes with the loading process. Or you may have had other problems that affected the update. Try this:

- Unplug power from the QMOD
- Hold down the Up and Down buttons while you plug power back in
- Release the buttons
- The LCD screen will be blank, essentially in standby for loading
- Press Program on S12 Load