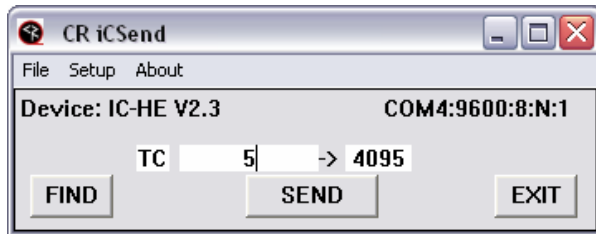


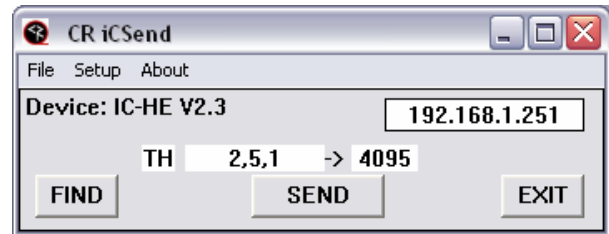
IC Send

RS-232 Tool for ICC-HE and ICE-HE Head Ends

Ver. 2.08



Com Setting



IP Setting

IC Send is a Windows application for testing iC-Net communication and control. Setup just takes a few steps:

- Connect a Female to Female null model cable (TX and RX swapped at one end) between a PC and a CR iC-Net Head End. **Connect the cable to the Program Port, not the iC-Net port.**
- Check to make sure the DIP switches on the front of the Head End is set to 19.2 Kb. Switch 6 set to Off, Switches 7 and 8 On.
- Launch iC Send – no installation is needed.
- Click **Setup** to choose RS-232 port or IP port.
- For IP Port, enter the IP address of the Head End.
- If the connection is successful, the firmware version of the HE will appear at the top left below the menus.
- If you change the cable or DIP switch settings on the HE, click **Find** to re-connect. IC Send automatically Finds the Head End when launched.

Entering Commands

- **Command:** Enter the command code in the first field.
- **Parameter:** Enter the parameter, if needed, in the second
- **Device:** Enter the device or Zone number for the controller(s)

Click SEND to send the command.

Devices and Zones

Typical Zone commands are:

- All = 4095
- Zone 1 = 256 (controllers between 257 and 511)
- Zone 2 = 512 (513 - 767)
- Zone 3 = 768 (769 - 1023)

Typical Commands

Command	Description	
All Controllers		
Power Off	P0	
Power On	P1	
Tune Analog	TC,	2-127 Example: TC,33
Tuning Format All	S0,	0=CATV 1=Off-Air 2=IRC 3=HRC 4=Auto
Volume	VL,	Sets TV volume level 0 = Mute 1 – 63 = Minimum level (1) to maximum volume (63)
RS-232		ICC1-232, ICC2-ATSC, ICC2-VDC
RS-232 Control	T0,	Selects control make and model for RS-232 control. Check Manual or www.crwww.com product Install page for codes
Tuning Style ICC1-232	H1=	1 = 5-digit CableCard style tuning (1-9999) 2 = Virtual HD Major-Minor tuning (tunes to virtual channel ID in display) 3 = Physical HD Major-Minor tuning (physical channel, minor digital)
HD Tuning	TH,	<Major>,<Minor> Example: TH,15,1 tunes channel 15-1
HD Tune Style ICC1-232	TH	<Style>,<Major>,<Minor> Once a Style parameter is included in tuning command, the ICC1-232 will stay in that mode until the Style is changed <Style> 0=No change in tuning style 1=5 digit channel (Major=high byte, Minor=low byte) 2=Virtual channel (Major-Minor) 3=Physical channel (Major=Physical - Minor=minor) Example: TH,3,15,1 tunes the digital channel physically broadcasting on 15 The ICC2-ATSC always tunes the virtual channel
IR		ICC1-IR, ICC2-IRC
IR Code	T1,	Sets IR control code. Check Manual or www.crwww.com product Install page for codes